

Apt. Type 24

Note: The location of windows on this plan is indicative only. Please refer to the floor plate and the elevation to confirm details of the location of windows for this apartment.

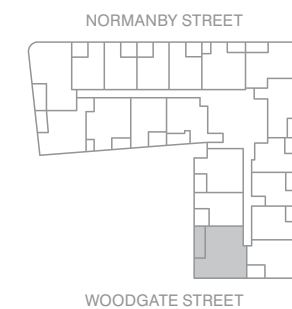
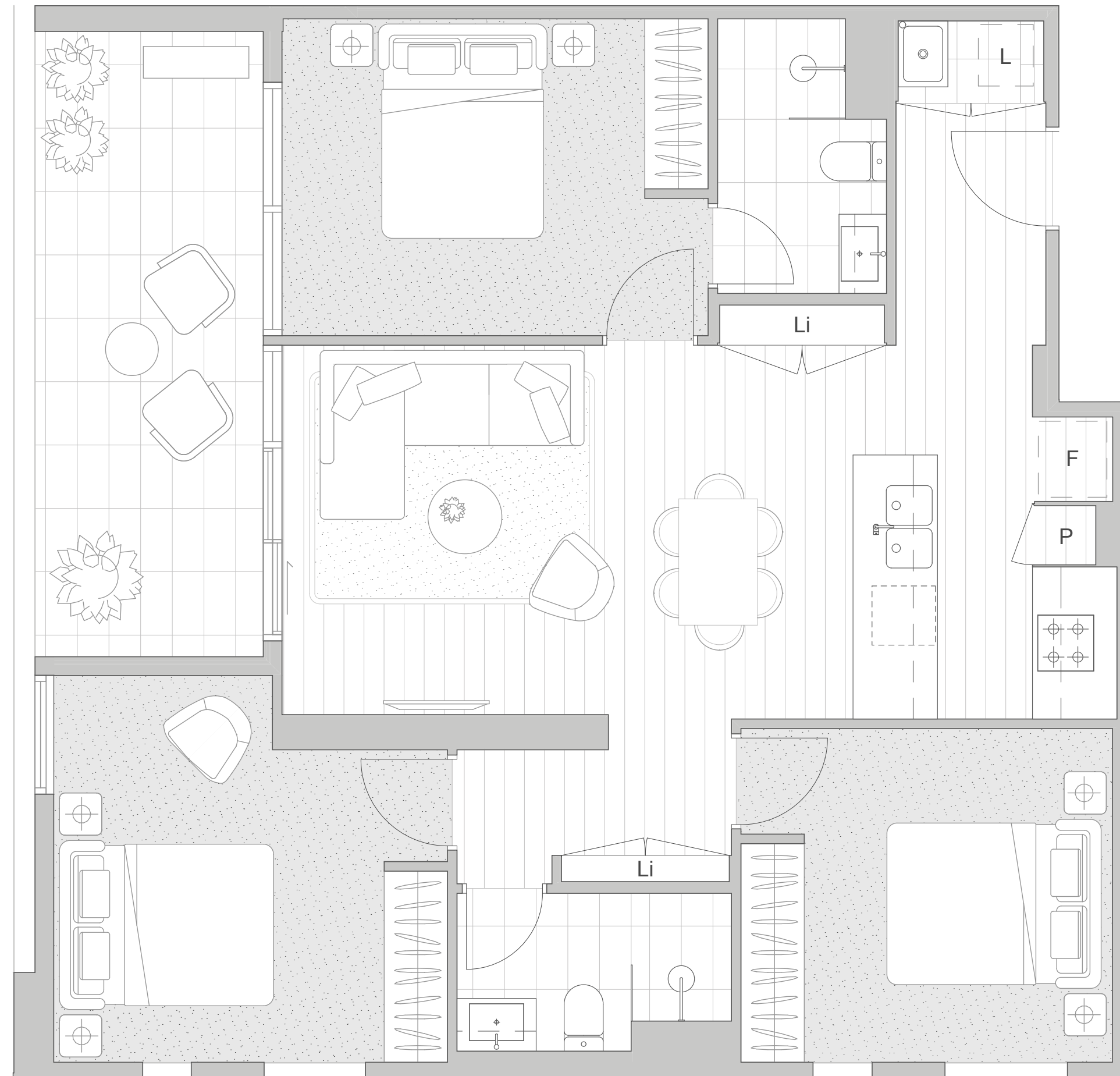
Apt. Numbers

515 – 1615, 1714, 1813, 1912, 2011, 2111

3 Bedroom

2 Bathroom

Total Area 103.1 sqm approx.



F: Refrigerator L: Laundry P: Pantry Li: Linen Cupboard Sh: Shelves

Disclaimer
These plans are for presentation purposes and are to be used as a guide only. These plans were completed prior to the completion of final design, engineering and construction of the building, therefore design, engineering, dimensions, areas, fittings, finishes, window placement, column size and placement and specifications are subject to change without notice in accordance with the provisions of the Contract of Sale. Unless expressly included in the specifications in the Contract of Sale, all furniture and whitegoods are not included. All calculations are based on Property Council of Australia Residential Method of Measurement guidelines and are an estimate only. Any dimensions or areas may differ from surveyed areas due to different methods of measurement. Location of condenser units may change. Purchasers should check the building plans and specifications included in the Contract of Sale carefully before signing the Contract of Sale.

Apt. Type 17

Note: The location of windows on this plan is indicative only. Please refer to the floor plate and the elevation to confirm details of the location of windows for this apartment.

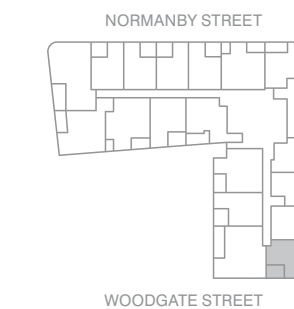
Apt. Numbers

516 – 1616, 1715, 1814, 1913, 2012, 2112, 2210

2 Bedroom

2 Bathroom

Total Area 79.8 sqm approx.



F: Refrigerator L: Laundry P: Pantry Li: Linen Cupboard Sh: Shelves

Disclaimer
These plans are for presentation purposes and are to be used as a guide only. These plans were completed prior to the completion of final design, engineering and construction of the building, therefore design, engineering, dimensions, areas, fittings, finishes, window placement, column size and placement and specifications are subject to change without notice in accordance with the provisions of the Contract of Sale. Unless expressly included in the specifications in the Contract of Sale, all furniture and whitegoods are not included. All calculations are based on Property Council of Australia Residential Method of Measurement guidelines and are an estimate only. Any dimensions or areas may differ from surveyed areas due to different methods of measurement. Location of condenser units may change. Purchasers should check the building plans and specifications included in the Contract of Sale carefully before signing the Contract of Sale.